



# Nectin 3 Polyclonal Antibody

<b>Catalog No</b>	YP-Ab-17085
<b>Isotype</b>	IgG
<b>Reactivity</b>	Human;Mouse;Rat
<b>Applications</b>	WB;ELISA
<b>Gene Name</b>	PVRL3
<b>Protein Name</b>	Poliovirus receptor-related protein 3
<b>Immunogen</b>	The antiserum was produced against synthesized peptide derived from the Internal region of human PVRL3. AA range:311-360
<b>Specificity</b>	Nectin 3 Polyclonal Antibody detects endogenous levels of Nectin 3 protein.
<b>Formulation</b>	Liquid in PBS containing 50% glycerol, 0.5% BSA and 0.02% sodium azide.
<b>Source</b>	Polyclonal, Rabbit,IgG
<b>Purification</b>	The antibody was affinity-purified from rabbit antiserum by affinity-chromatography using epitope-specific immunogen.
<b>Dilution</b>	Western Blot: 1/500 - 1/2000. ELISA: 1/20000. Not yet tested in other applications.
<b>Concentration</b>	1 mg/ml
<b>Purity</b>	≥90%
<b>Storage Stability</b>	-20°C/1 year
<b>Synonyms</b>	PVRL3; PRR3; Poliovirus receptor-related protein 3; CDw113; Nectin-3; CD113
<b>Observed Band</b>	60kD
<b>Cell Pathway</b>	Cell membrane ; Single-pass membrane protein . Cell junction, synapse, postsynaptic cell membrane .
<b>Tissue Specificity</b>	Predominantly expressed in testis and placenta as well as in many cell lines, including epithelial cell lines.
<b>Function</b>	function:Plays a role in cell-cell adhesion through heterophilic trans-interactions with nectin-like proteins or nectins, such as trans-interaction with PVRL2/nectin-2 at Sertoli-spermatid junctions. Trans-interaction with PVR induces activation of CDC42 and RAC small G proteins through common signaling molecules such as SRC and RAP1. Also involved in the formation of cell-cell junctions, including adherens junctions and synapses. Induces endocytosis-mediated down-regulation of PVR from the cell surface, resulting in reduction of cell movement and proliferation. Plays a role in the morphology of the ciliary body.,similarity:Belongs to the nectin family.,similarity:Contains 1 Ig-like V-type (immunoglobulin-like) domain.,similarity:Contains 2 Ig-like C2-type (immunoglobulin-like) domains.,subunit:Cis- and trans-homodimer. Can form trans-heterodimers with PVRL1/nectin-1, PVRL2/nectin-2, PVR
<b>Background</b>	This gene encodes a member of the nectin family of proteins, which function as adhesion molecules at adherens junctions. This family member interacts with



other nectin-like proteins and with afadin, a filamentous actin-binding protein involved in the regulation of directional motility, cell proliferation and survival. This gene plays a role in ocular development involving the ciliary body. Mutations in this gene are believed to result in congenital ocular defects. Alternative splicing results in multiple transcript variants. [provided by RefSeq, Aug 2011],

#### matters needing attention

Avoid repeated freezing and thawing!

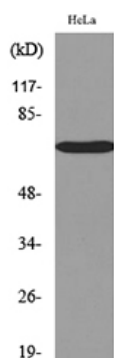
#### Usage suggestions

This product can be used in immunological reaction related experiments. For more information, please consult technical personnel.

### Products Images



Western Blot analysis of HeLa cells using Nectin 3 Polyclonal Antibody. Secondary antibody(catalog#:RS0002) was diluted at 1:20000



Western blot analysis of lysate from HeLa cells, using PVRL3 Antibody.